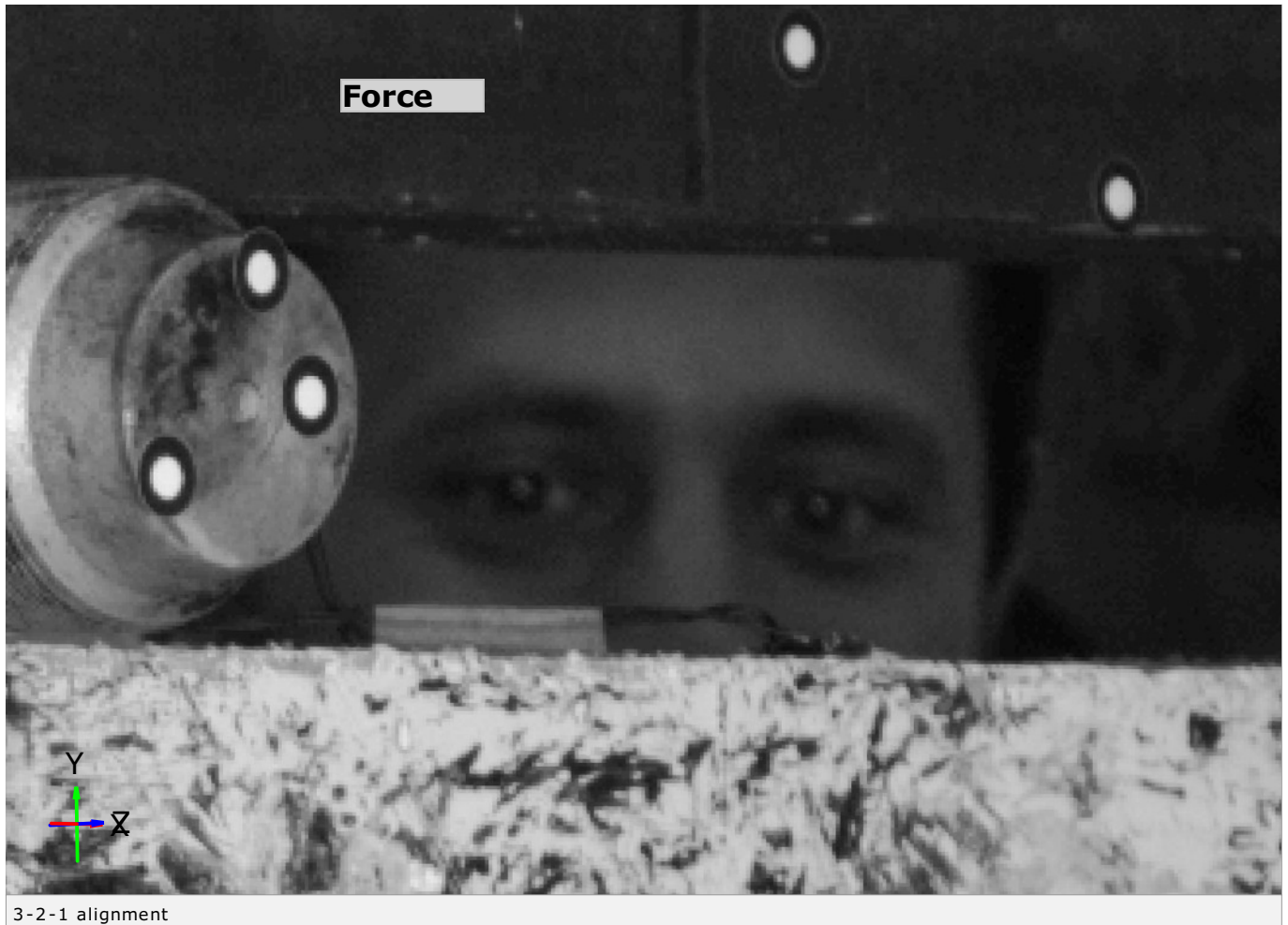


belka 1

Geometry reference: 84.40 s

542.40 s



Inspector: dr Marcin Kneć +48 513 508 997 m.knec@lenso.com.pl

Date: 2018-09-27

Location:

Company:

Department:

System:

Project:

Version:

Part preparation:

Illumination:

Material:

Test conditions:

Test speed:

27.09.2018



Spis treści

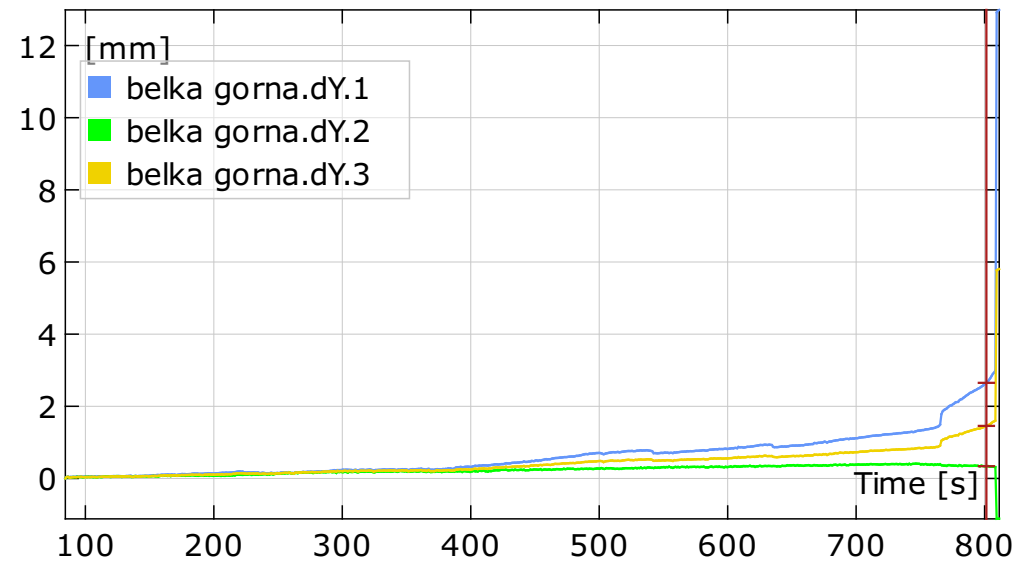
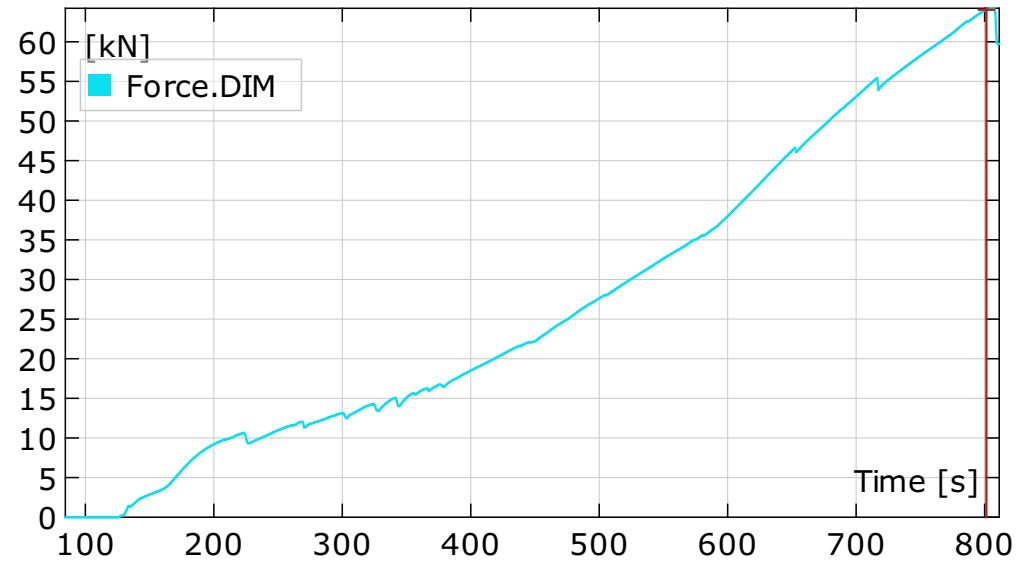
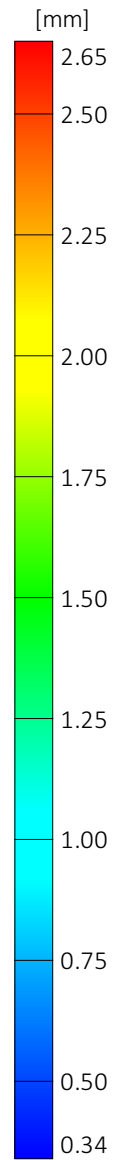
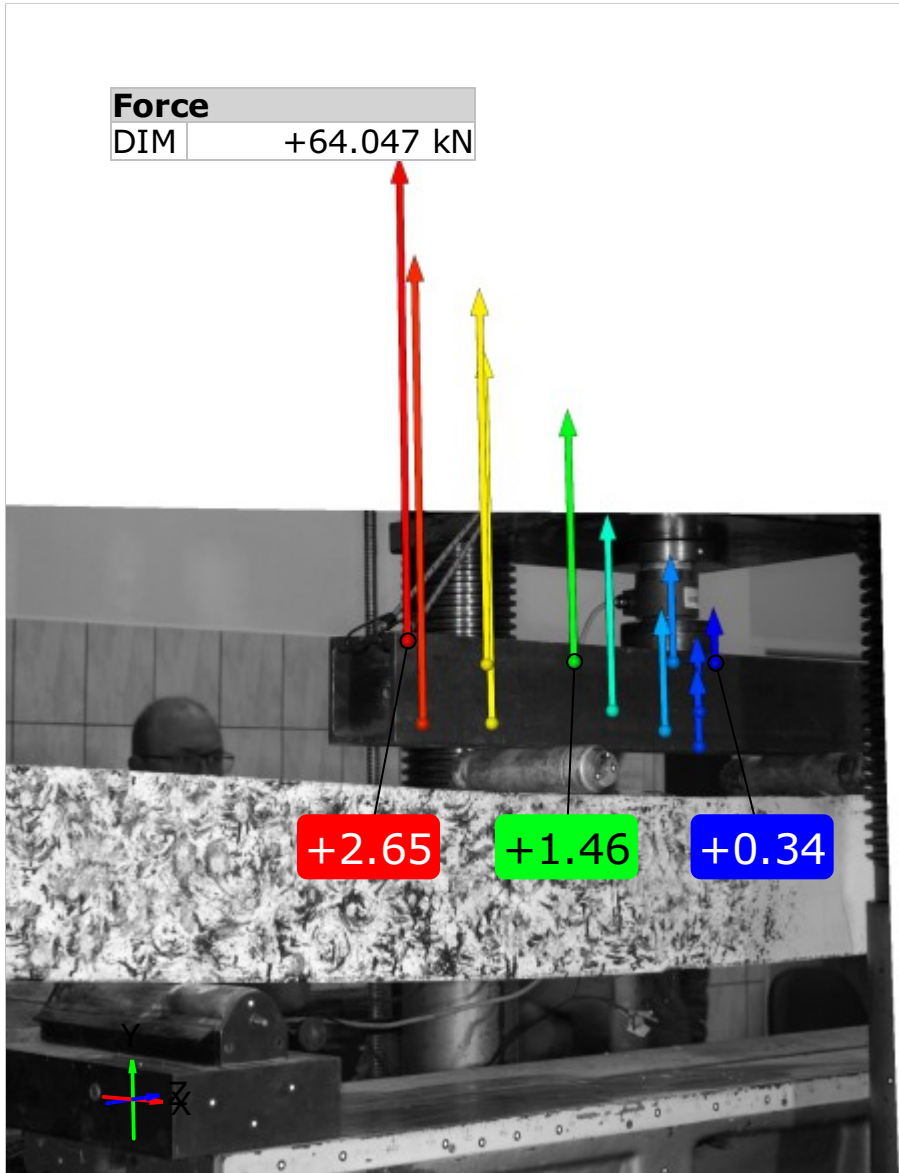
belka 1.....	1
Spis treści.....	2
Ugięcie belki górnej.....	3
Ugięcie stołu.....	4
Obrót rolki wokół OZ - lokalny układ współrzędnych.....	5
Różne wizualizacje pęknięć.....	6
Siła i tensometry -import z pliku.....	7
Odształcenia główne I + siła i tensometry.....	8
Pomiar rozwarcia z wykorzystaniem wirtualnych ekstensometrów	9
Wizualizacja rys + wykres siły.....	10



Ugięcie belki górnej

801.40 s

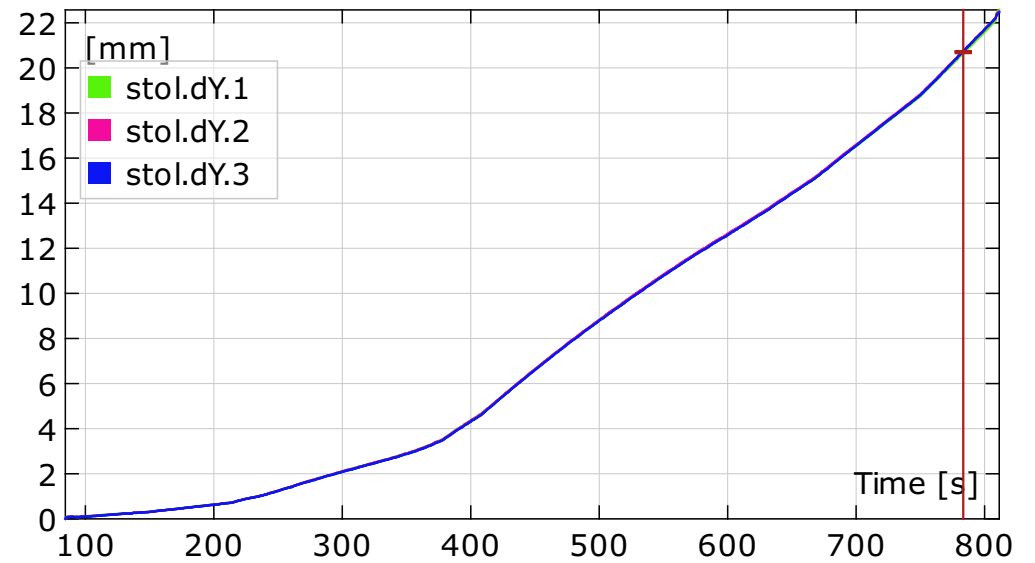
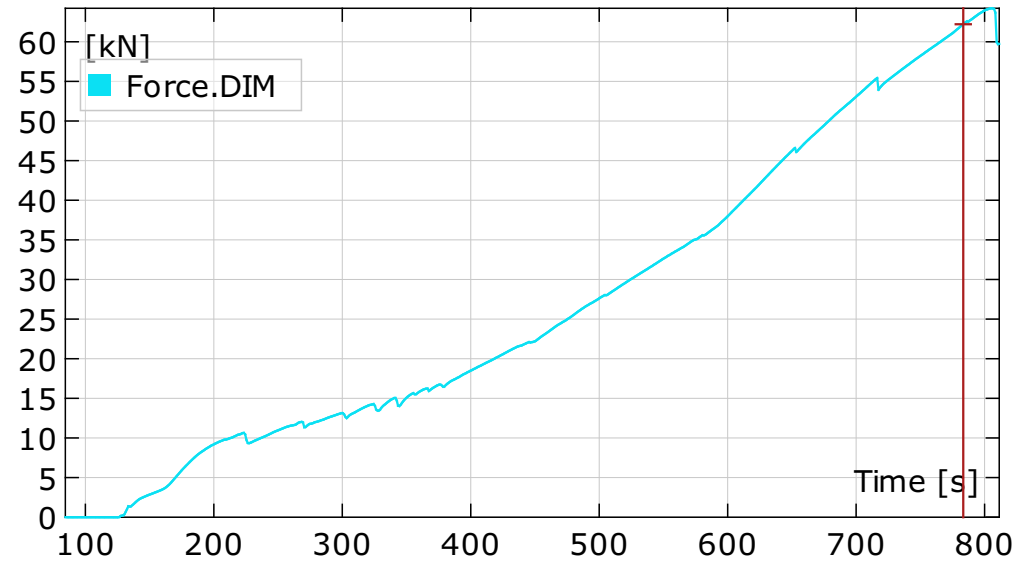
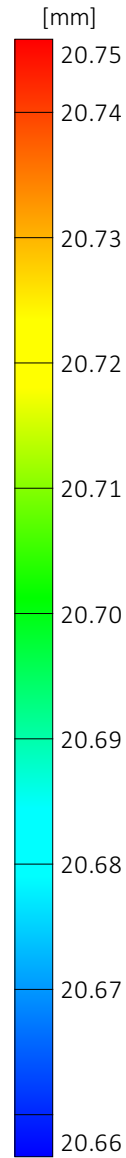
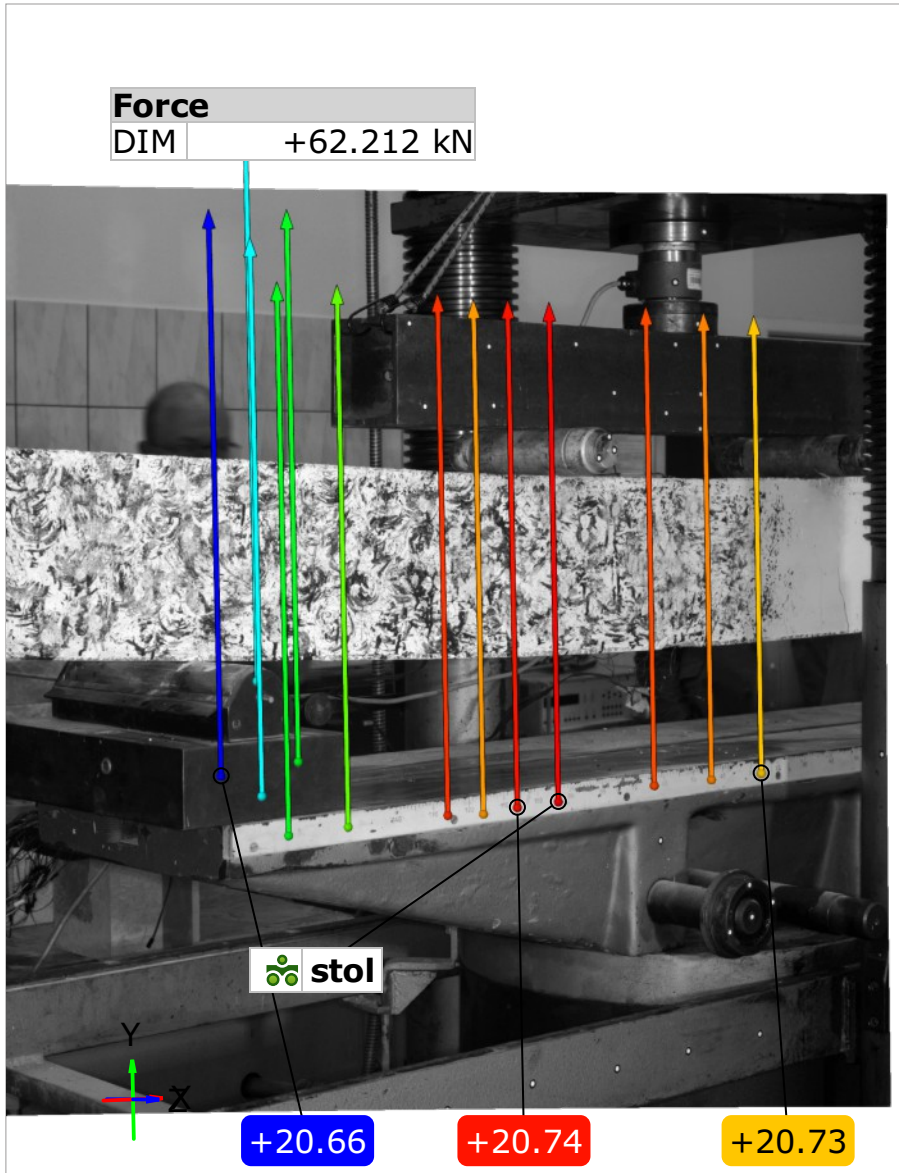
Geometry reference: 84.40 s



Ugięcie stołu

783.40 s

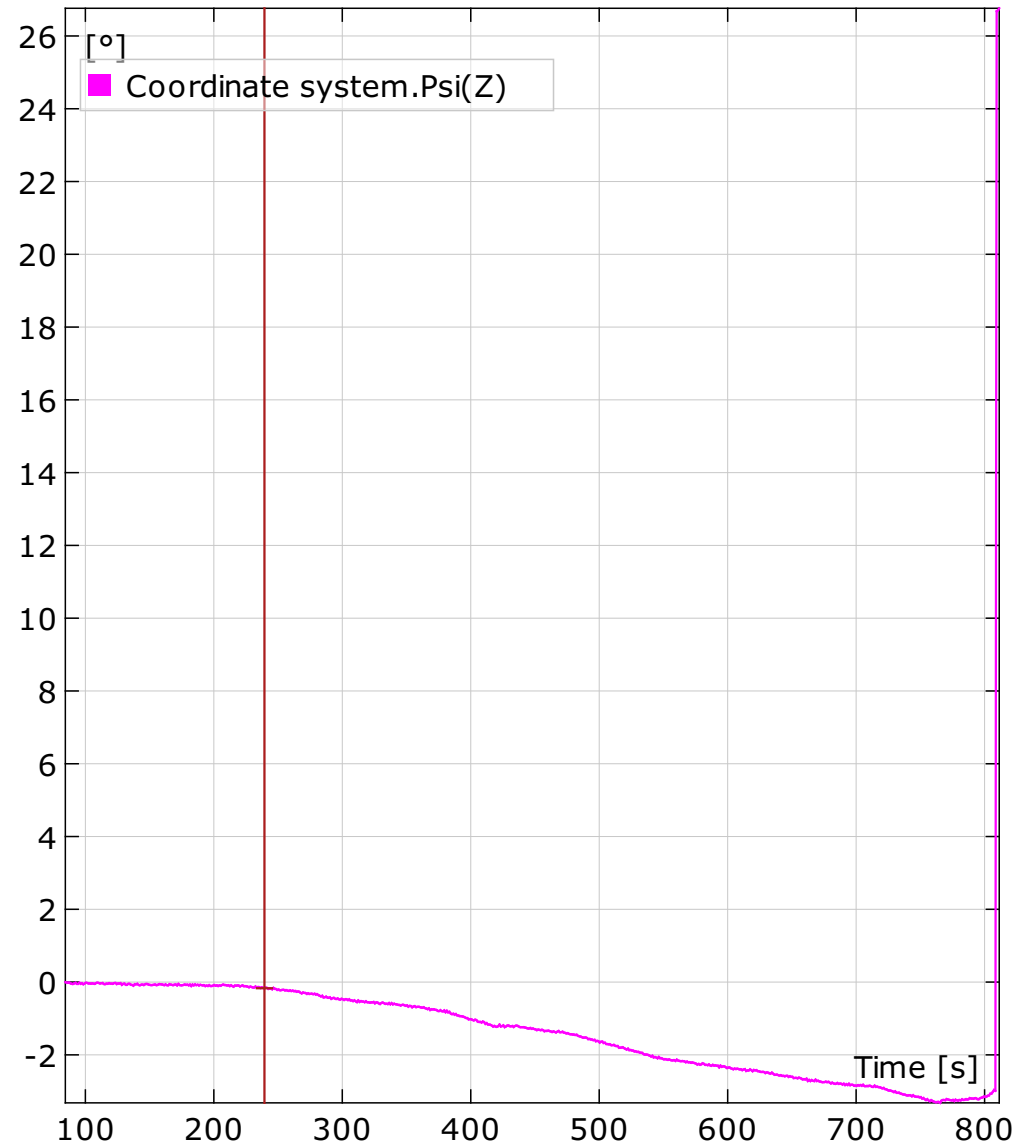
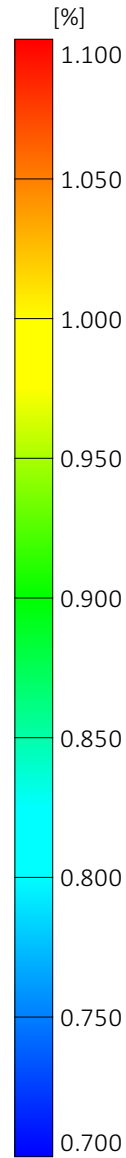
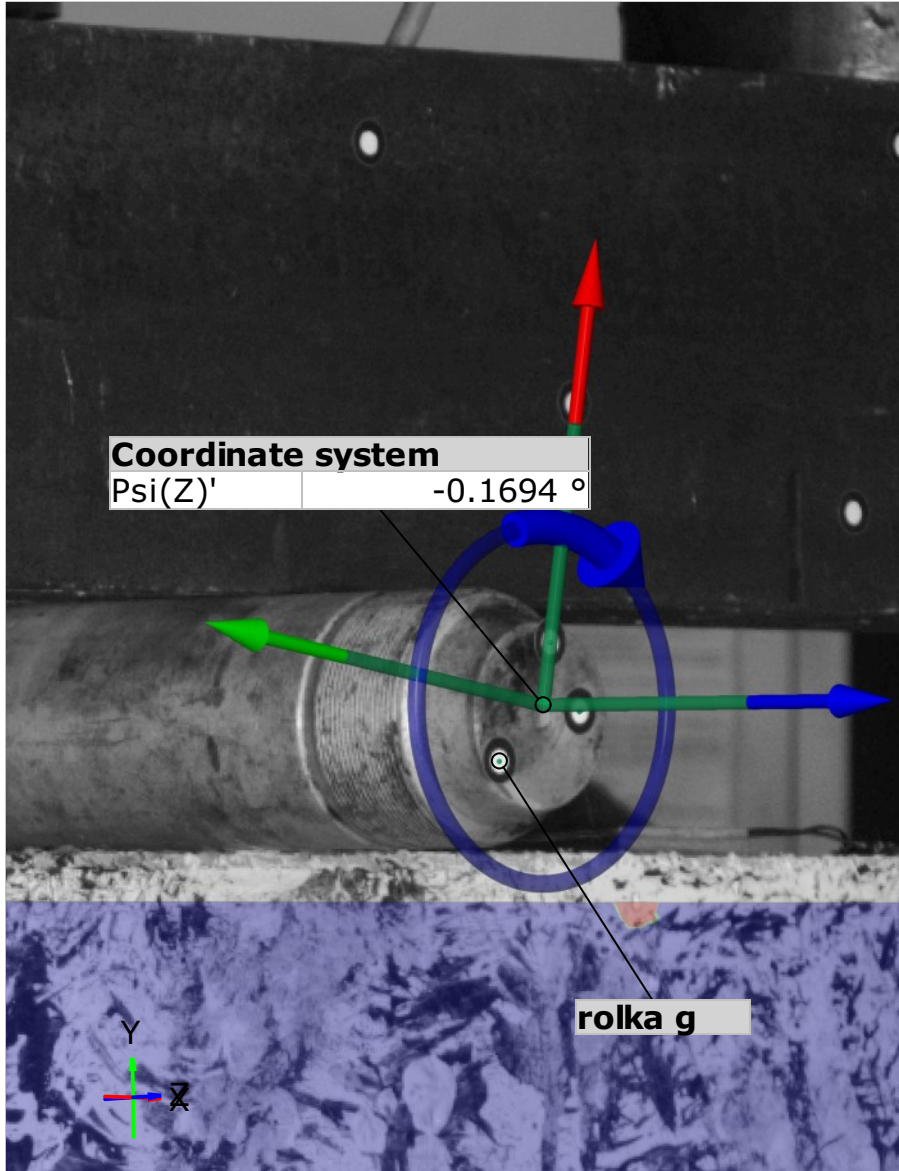
Geometry reference: 84.40 s



Obrót rolki wokół OZ - lokalny układ współrzędnych

239.40 s

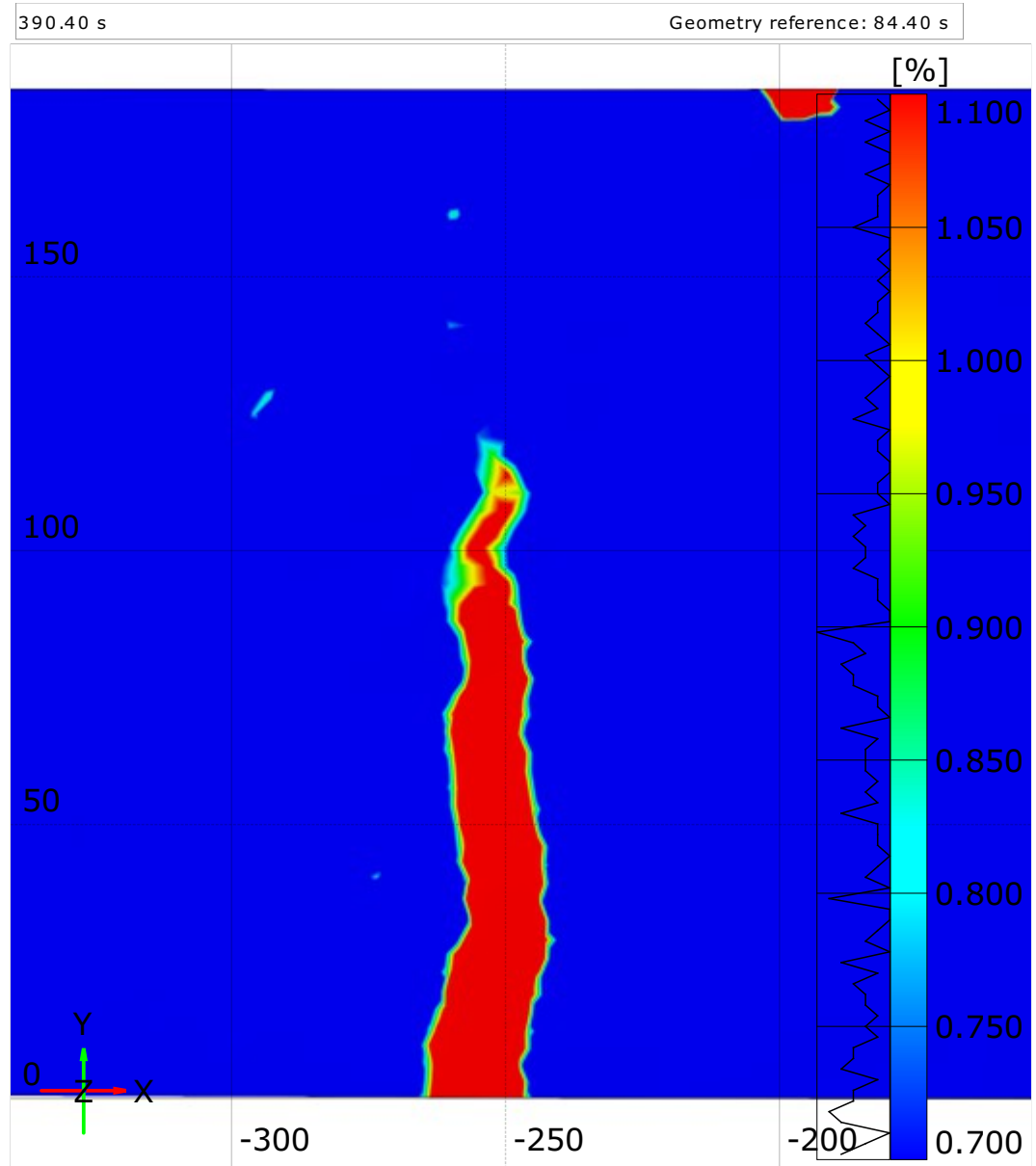
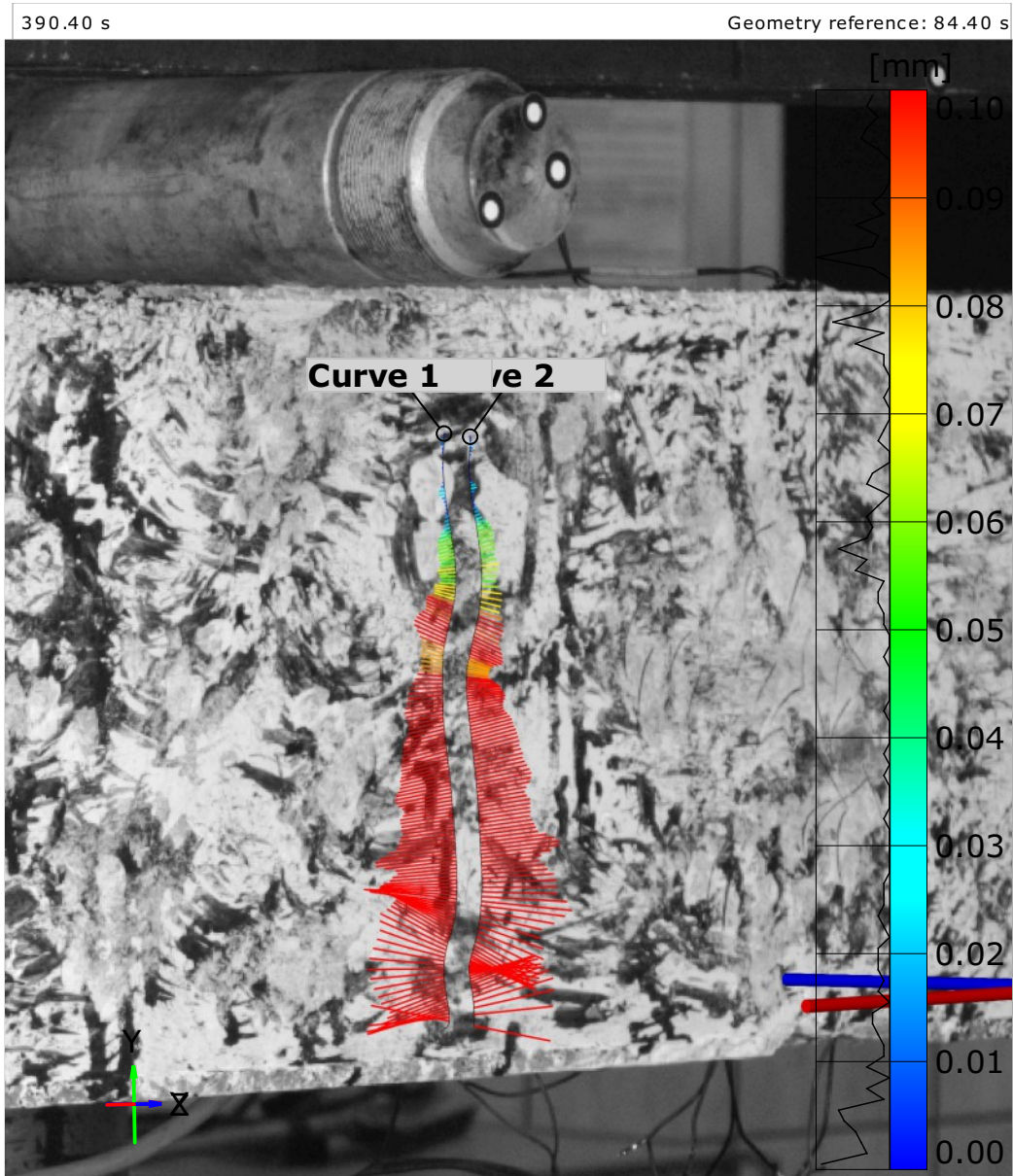
Geometry reference: 84.40 s



3-2-1 alignment

27.09.2018

Różne wizualizacje pęknięć



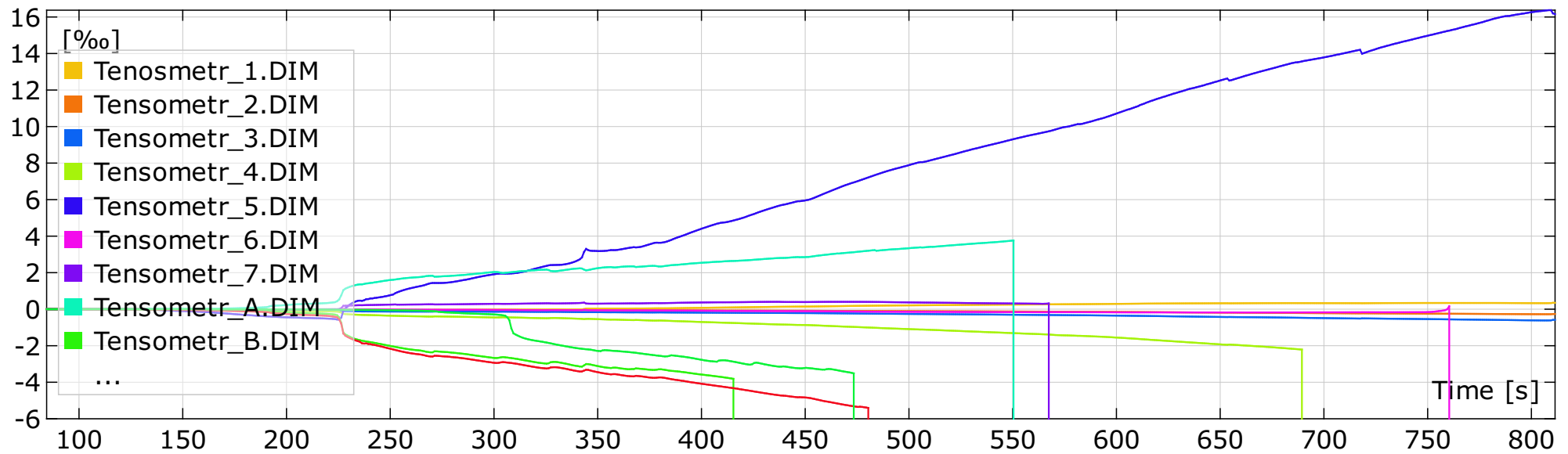
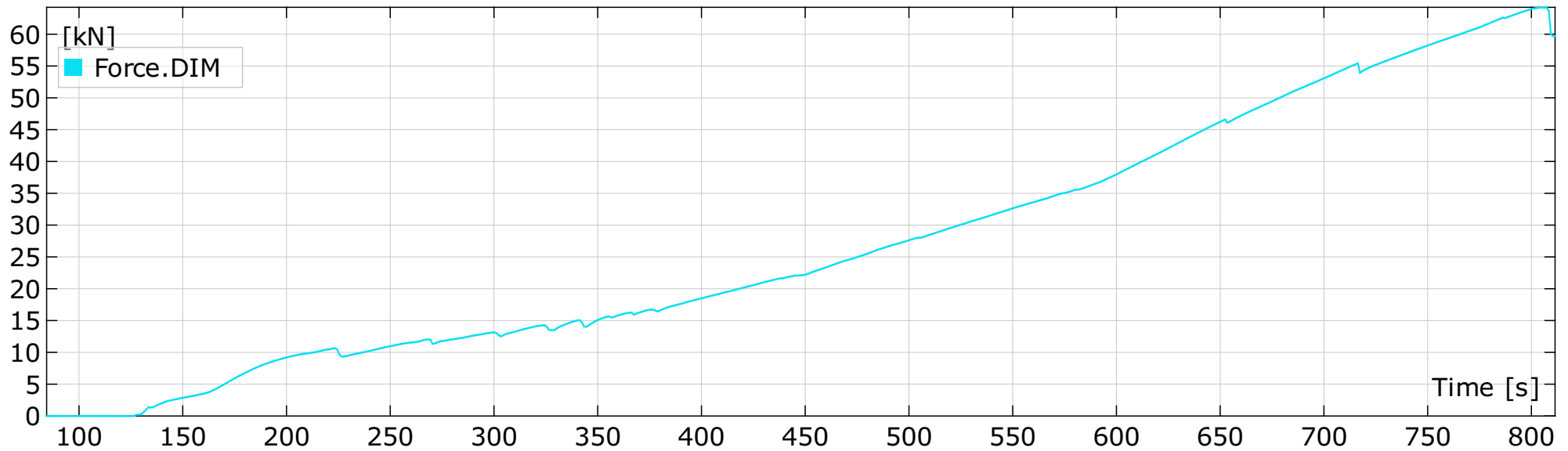
3-2-1 alignment

27.09.2018

3-2-1 alignment

Siła i tensometry -import z pliku

Geometry reference: 84.40 s



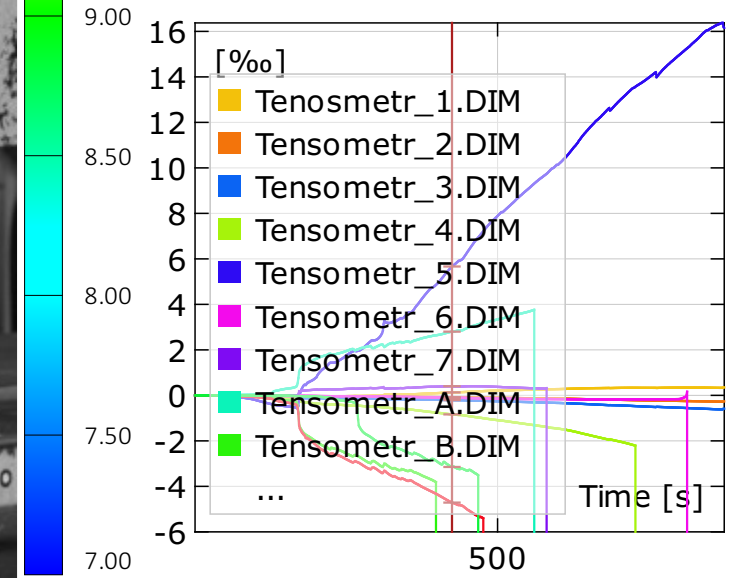
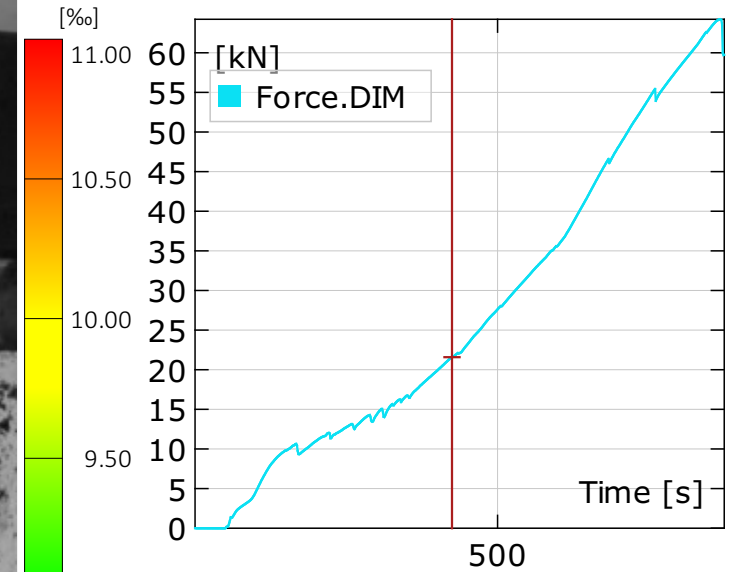
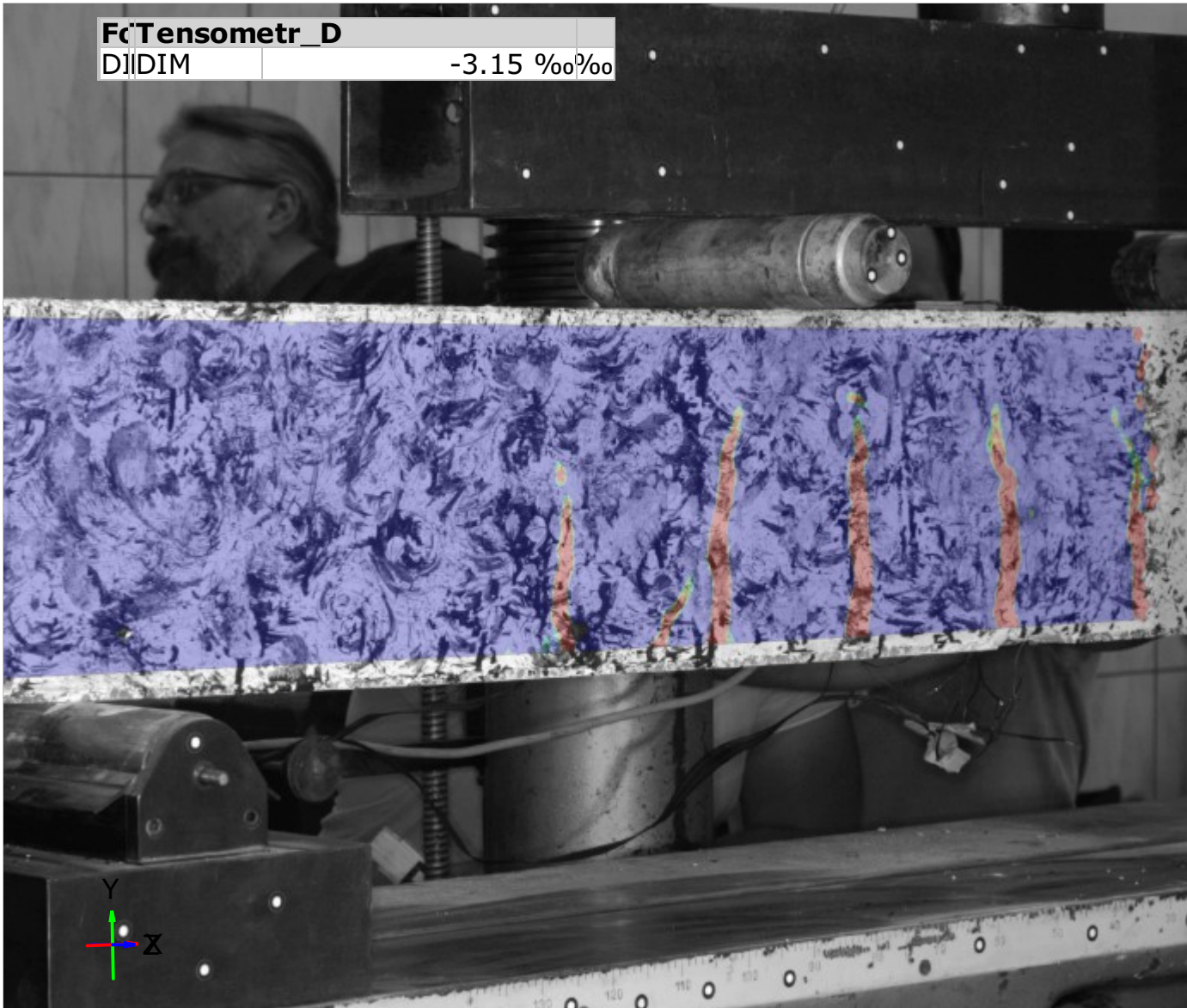
3-2-1 alignment

27.09.2018

Odształcenia główne I + siła i tensometry

437.40 s

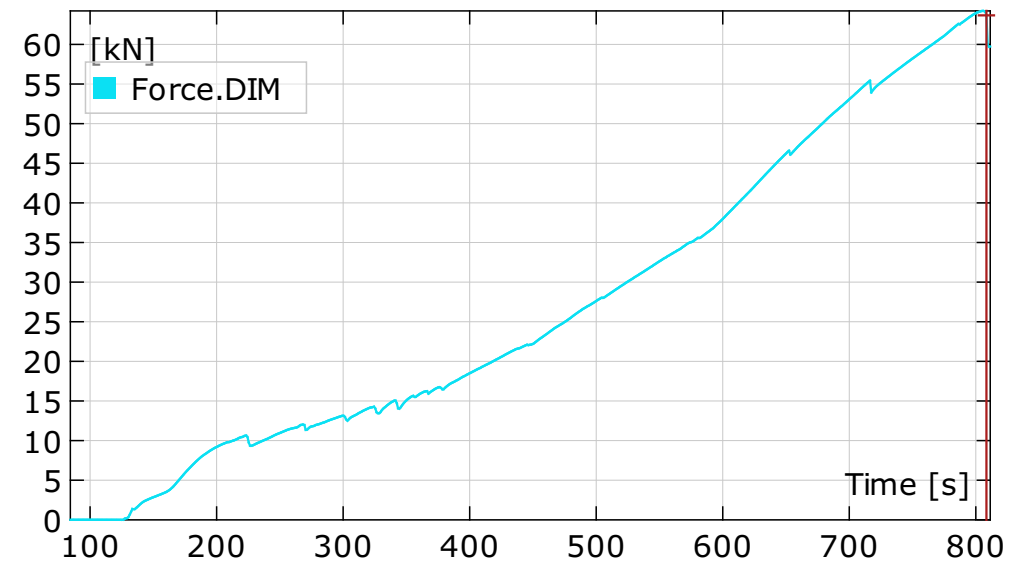
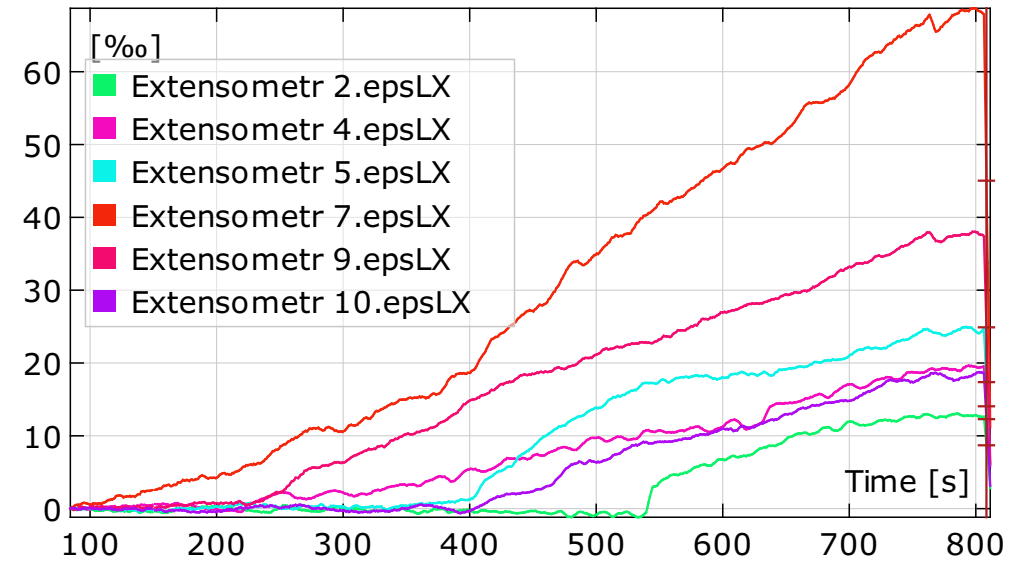
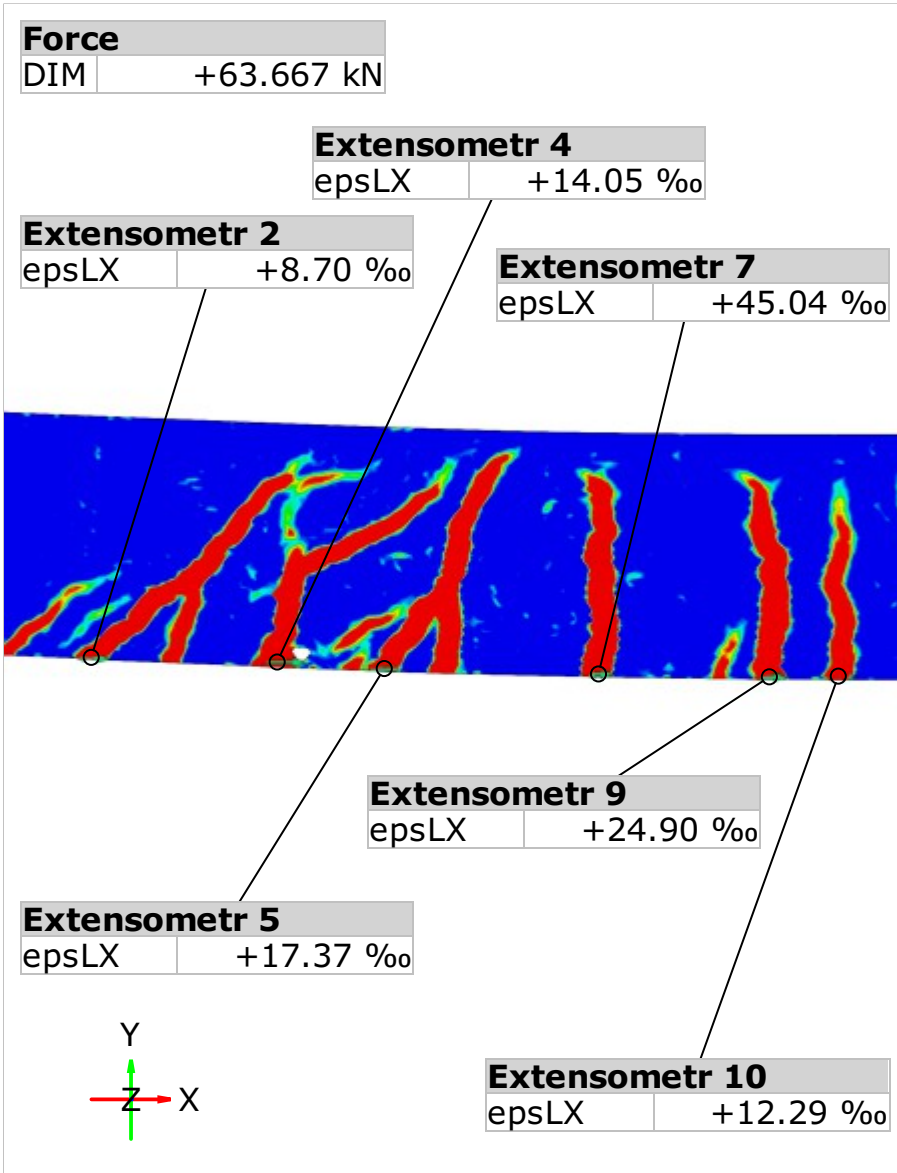
Geometry reference: 84.40 s



Pomiar rozwarcia z wykorzystaniem wirtualnych ekstensometrów

808.40 s

Geometry reference: 84.40 s



Wizualizacja rys + wykres siły

786.40 s

Geometry reference: 84.40 s

